

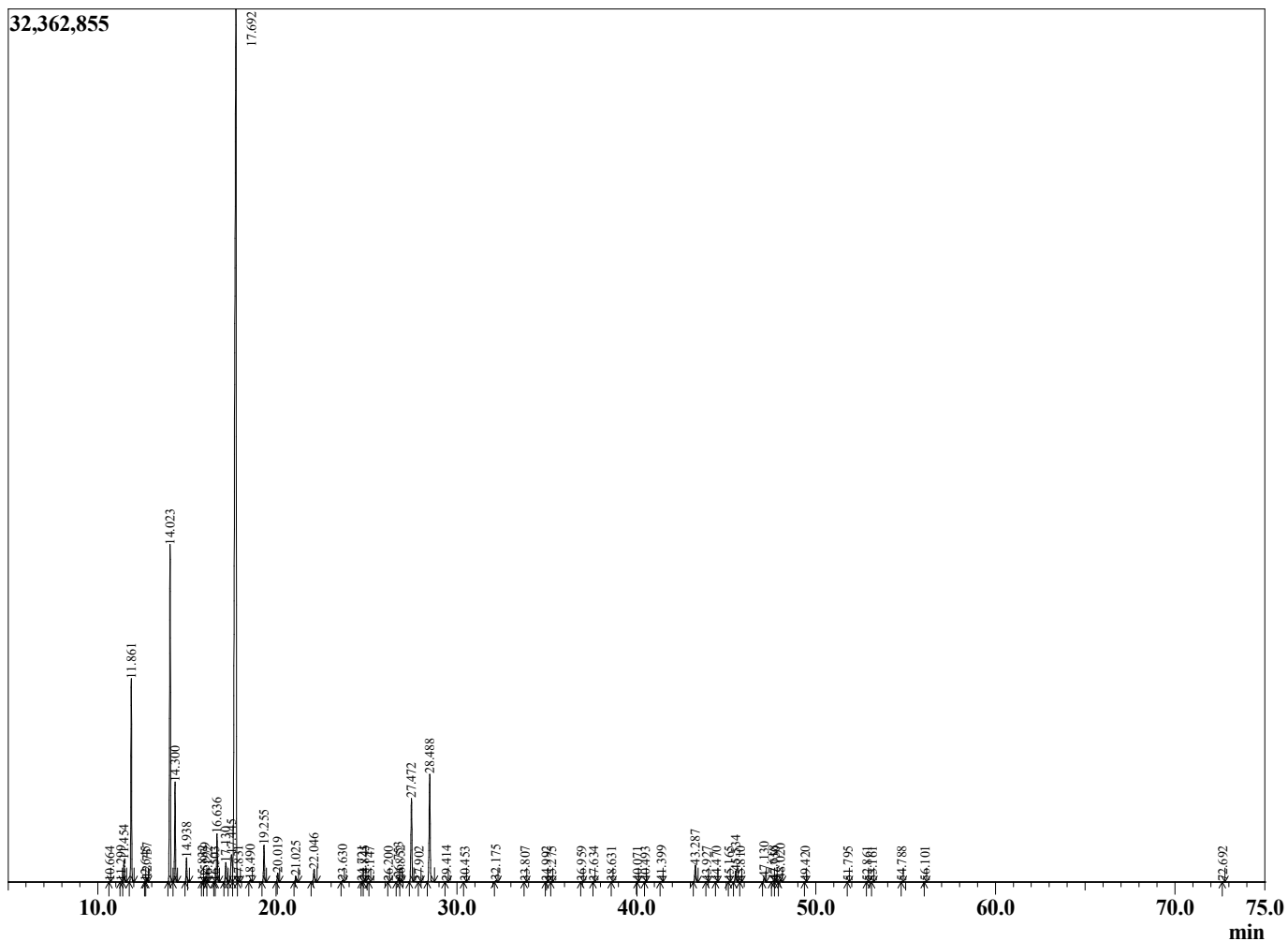
Sample Information

Sample Type : Essential Oil
 Sample Name : Cinnamomum camphora
 Injection Volume : 0.10

Ravintsara
 Lot# MAW6-WK
 Country: Madagascar



Chromatogram Cinnamomum camphora



R.Time	Name	Area%
10.664	2,6-Dimethyl-3-octene	0.00
11.299	Tricyclene	0.02
11.454	alpha-Thujene	0.70
11.861	alpha-Pinene	6.63
12.645	alpha-Fenchene	0.01
12.737	Camphene	0.10
14.023	Sabinene	12.73
14.300	beta-Pinene	3.35
14.938	Myrcene	0.86
15.832	Pseudolimonene	0.02
15.979	alpha-Phellandrene	0.14
16.122	delta-3-Carene	0.01
16.503	1,4-Cineole	0.00
16.636	alpha-Terpinene	1.83
17.130	para-Cymene	0.88
17.445	Limonene	1.70
17.692	1,8-Cineole	57.58
17.831	cis-beta-Ocimene	0.05
18.490	trans-beta-Ocimene	0.08
19.255	gamma-Terpinene	1.38
20.019	trans-Sabinene hydrate	0.35
21.025	Terpinolene	0.22
22.046	cis-Sabinene hydrate	0.57
23.630	cis-para-Menth-2-en-1-ol	0.07
24.721	trans-Pinocarveol	0.02
24.845	trans-para-Menth-2-en-1-ol	0.04
25.147	Camphor	0.01
26.200	Pinocarvone	0.00
26.753	delta-Terpineol	0.20
26.852	Borneol	0.04
27.472	Terpinen-4-ol	3.57
27.902	Cryptone	0.01
28.488	alpha-Terpineol	4.89
29.414	trans-Piperitol	0.03
30.453	Nerol	0.01
32.175	Linalyl acetate	0.06
33.807	cis-Ascaridol glycol	0.01
34.992	trans-Ascaridol glycol	0.01
35.275	Terpin-1-en-4-yl acetate	0.00
36.959	Unidentified	0.01
37.634	delta-Elemene	0.01
38.631	alpha-Cubebene	0.00
40.071	alpha-Ylangene	0.00
40.493	alpha-Copaene	0.00
41.399	beta-Elemene	0.02
43.287	beta-Caryophyllene	0.80
43.927	gamma-Elemene	0.01
44.470	Aromadendrene	0.01
45.165	Humulen-(v1)	0.01
45.534	alpha-Humulene	0.50
45.810	Alloaromadendrene	0.00
47.130	Germacrene D	0.22
47.618	beta-Selinene	0.04
47.750	Viridiflorene	0.02
48.020	Bicyclogermacrene	0.12
49.420	delta-Cadinene	0.01

R.Time	Name	Area%
51.795	Germacrene B	0.01
52.861	Spathulenol	0.01
53.161	Caryophyllene oxide	0.01
54.788	Humulene epoxide II	0.00
56.101	Unidentified	0.01
72.692	meta-Camphorene	0.01
		100.00